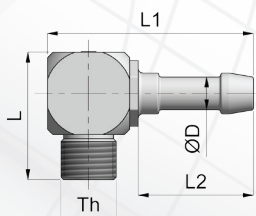


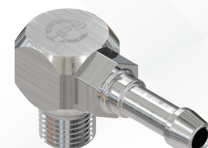
# 90° PLUGS / RACCORD FILETÉ 90° WINKELSTECKER



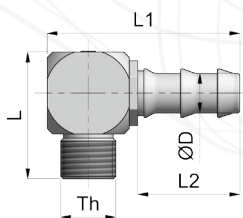
## 90° MALE THREAD FOR HOSE / RACCORD FILETÉ 90° POUR TUYAU WINKELSTECKER FÜR SCHLAUCH



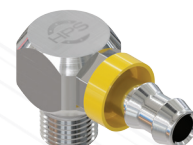
Th (G)	Ø D	L	L1	L2	Part-number
1/4	8	26	46	25	R14T08C
1/4	10	26	49	28	R14T10C
3/8	10	28	51	28	R38T10C
3/8	13	28	51	28	R38T12C
1/2	16	34.5	62.5	33	R12T16C



## 90° MALE THREAD FOR PUSH LOCK HOSE RACCORD FILETÉ 90° POUR TUYAU PUSH LOCK WINKELSTECKER FÜR SCHLAUCHTÜLLE



Th (G)	Ø D	L	L1	L2	Part-number
1/4	10	26	45	25	R14T10CSL
3/8	10	28	49	25	R38T10CSL
3/8	13	28	52	28	R38T13CSL
3/8	16	28	61	37	R38T16CSL
1/2	16	34.5	66	37	R12T16CSL



## SPARE O-RING / JOINT DE RECHANGE / ERSATZ O-RING

Nitrile (NBR)	Serie	Temperature	Part-number
	HPS 06	-15°C / +100°C (+5°F / +212°F)	SKP06N
	HPS 08		SKP08N
	HPS 12		SKP12N
Viton (FPM)	Serie	Temperature	Part-number
	HPS 06	-15°C / +200°C (+5°F / +392°F)	SKP06V
	HPS 08		SKP08V
	HPS 12		SKP12V