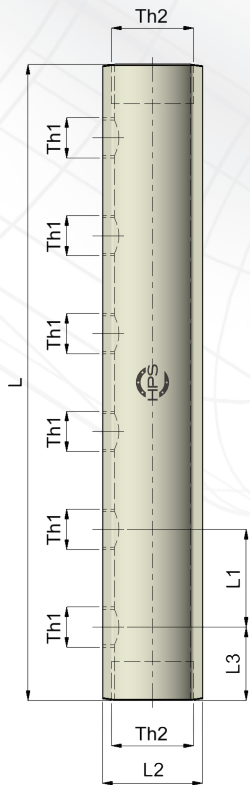
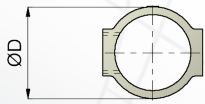




■ WATER COLLECTOR / **COLLECTEUR EAU** / WASSERVERTEILER



Th1 (BSP)	Th2 (BSP)	ØD	L1	L2	L3
3/8	3/4	31	35	35	21
1/2	3/4	31	50	36	23
3/8	1"	38	35	41	23
1/2	1"	38	50	42	25
1/2	1" 1/4	47	50	51	25
3/4	1" 1/4	47	70	51	27
1"	1" 1/2	55	100	62	35
1"	2"	68	100	74	37

Color on Request / **Couleur sur Demande** / Farbe auf Anfrage

N° of Outputs	L (mm)							
	3/8 x 3/4	1/2 x 3/4	3/8 x 1"	1/2 x 1"	1/2 x 1" 1/4	3/4 x 1" 1/4	1" x 1" 1/2	1" x 2"
2	76	95	80	99	99	124	169	174
3	111	145	115	149	149	194	269	274
4	146	195	150	199	199	264	369	374
5	181	245	185	249	249	334	469	474
6	216	295	220	299	299	404	569	574
7	251	345	255	349	349	-	669	-
8	286	395	290	399	399	-	769	-
9	321	445	325	449	449	-	869	-
10	356	495	360	499	499	-	969	-
11	391	545	395	549	549	-	1069	-
12	426	595	430	599	599	-	1169	-



(EX) HPBC1A112B12S

Part-number

HPBC ...A ...B ...S

Serie

Th1

Th2

Number of Outputs

Temperature Range: 5°C to 110°C  
 Max. Working Pressure: 16 bar  
 Main connections and output female threaded: ISO228  
 Material: CW605N Brass

Plage de Température: 5°C à 110°C  
 Pression d'utilisation Maximale: 16 bar  
 Connexions principales et sortie taraudage: ISO228  
 Matière: Laiton CW605N

Temperaturbereich: 5°C bis 110°C  
 Max. Betriebsdruck: 16 bar  
 Hauptanschlüsse und Ausgang mit Innengewinde: ISO228  
 Material: CW605N Messing